

Bennelong Kardinia Absolute Return Fund

Monthly performance report

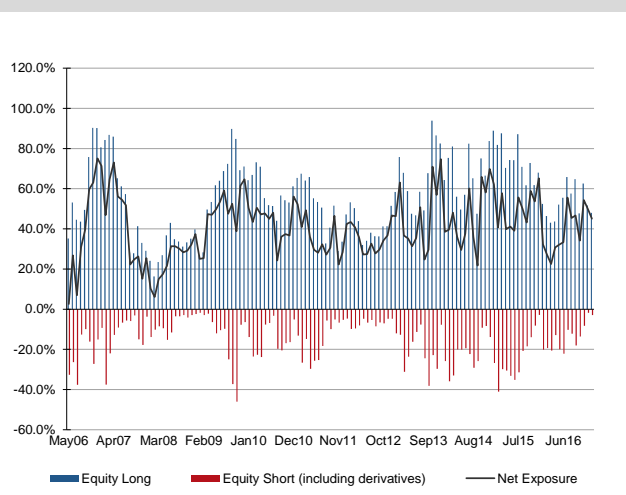
As at 31 January 2017

Fund at a glance

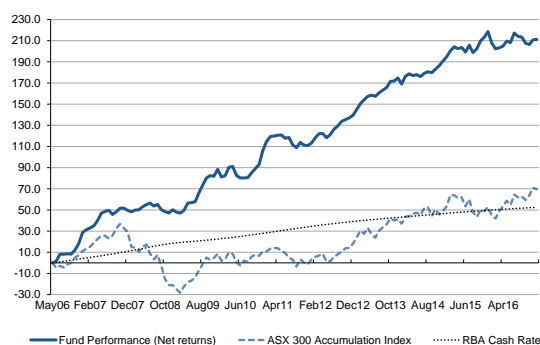
Fund facts	
Strategy	Long-short Australian equity
Process	Fundamental stock selection based on analysis of the macroeconomic environment, company and operating environment, quality of management and valuation
Objective	To achieve double digit annual rates of return through an investment cycle, with an overarching philosophy of capital protection
FUM	AUD 340.3 million
Inception date	1 May 2006
Unit price: daily series	1.1936
Unit price: monthly series	1.4108
Fund managers	Mark Burgess, CFA® Kristiaan Rehder, CFA®
Annualised return	11.14%
Return since inception	211.21%
Annualised standard deviation	7.22%
Sharpe ratio (RFR=RBA cash)	0.99
Percentage of positive months	71.32%

Fund in review

Portfolio exposure analysis



Fund performance



Timeframe	Fund return	Benchmark	Value added
1 month	0.12%	0.13%	(0.01%)
3 months	1.19%	0.38%	0.81%
6 months	(1.91%)	0.76%	(2.67%)
1 year	1.12%	1.70%	(0.58%)
3 years p.a.	4.97%	2.11%	2.87%
5 years p.a.	7.85%	2.54%	5.31%
Since inception p.a.	11.14%	4.00%	7.14%

Note: Performance results are presented net of all transaction costs, investment management and performance fees and all other costs incurred by the Fund. Performance is the total return of the fund (assuming re-investment of distributions) and is quoted based on hard-close unit prices, without including the impact of buy/sell spreads. The benchmark is the RBA cash rate and the inception date is 1 May 2006.

Market and fund commentary

The Australian equity market underperformed in January despite strength in Mining and Metals stocks globally on the back of rising commodity prices. The S&P/ASX 300 Accumulation Index fell 0.77% weighed down by REITs, Industrials, Consumer Discretionary and profit taking in the Banks.

The Australian dollar rallied 4.8% to US\$0.759 due to a combination of A\$ strength (firmer commodity prices) and US\$ weakness (Trump Administration jawboning). Outside of Energy, commodity markets were stronger, led by industrial and precious metals. The iron ore price reached its highest level since September 2014.

Bennelong Kardinia Absolute Return Fund

Monthly performance report

As at 31 January 2017

Healthcare (primarily CSL) +4.8% and Materials (commodity producers rather than building materials stocks) +4.7% were the standout sectors in January. REITs (-4.8%), Industrials (-4.7%), Consumer Discretionary (-4.3%) and Financials (-2.0%) all dragged the market lower. Large caps outperformed small caps again.

The Bennelong Kardinia Absolute Return Fund rose 0.12% for the month. BlueScope Steel, Rio Tinto, Incitec Pivot and BHP Billiton were the largest contributors to performance whilst ANZ, James Hardie and Independence Group were the largest detractors. Net equity market exposure was reduced slightly to 45.1% (48.0% long and 2.9% short).

Fund performance

	Jan	Feb	Mar	Apr	May	Jun	Jul	Aug	Sep	Oct	Nov	Dec	YTD
2017	0.12%												0.12%
2016	-3.42%	-1.78%	0.30%	0.52%	1.60%	-0.47%	2.95%	-1.02%	-0.22%	-1.85%	-0.37%	1.45%	-2.44%
2015	1.44%	1.90%	1.24%	-0.59%	0.41%	-1.49%	2.20%	-2.27%	1.14%	2.45%	1.16%	1.74%	9.60%
2014	-2.12%	2.69%	0.87%	-0.63%	0.36%	-0.66%	1.07%	0.56%	-0.31%	1.22%	1.13%	1.53%	5.77%
2013	2.21%	2.36%	1.42%	1.34%	0.40%	-0.46%	1.31%	0.96%	0.93%	2.17%	0.15%	1.11%	14.76%
2012	1.08%	2.30%	1.82%	0.04%	-1.79%	1.38%	2.30%	1.38%	1.85%	0.68%	0.71%	1.07%	13.52%
2011	4.25%	2.13%	0.23%	0.37%	0.11%	-1.41%	0.31%	-3.23%	-1.19%	2.31%	-1.16%	-0.13%	2.42%
2010	-3.82%	0.66%	4.36%	0.36%	-4.38%	-1.33%	0.03%	0.09%	2.49%	2.19%	2.02%	6.84%	9.33%
2009	-1.46%	-0.68%	1.79%	4.56%	0.34%	0.54%	5.31%	4.41%	3.86%	1.21%	-0.28%	3.59%	25.47%
2008	-1.00%	1.12%	0.17%	1.93%	1.33%	0.87%	-1.72%	1.02%	-3.20%	-1.29%	-0.81%	2.04%	0.30%
2007	2.04%	1.28%	1.45%	3.74%	4.95%	1.21%	0.65%	-2.62%	1.76%	2.36%	-0.02%	-1.34%	16.36%
2006					1.53%	6.54%	-0.06%	0.32%	-0.22%	3.65%	5.50%	8.72%	28.67%

Platforms

AMP: North, PortfolioCare (incl. eWrap), Wealthview, PPS	Hub 24
Asgard: MasterFund, eWrap, Infinity	Macquarie Wrap: IDPS, Super
BT Wrap	Netwealth Wrap Services
CFS: FirstChoice, FirstWrap	Oasis: Dominion, Superior Wealth, Wealthtrac
Credit Suisse (HSBC)	UBS
Federation Managed Accounts	

How to invest

The Fund is open to investors directly via the PDS, available on our [website](#), or via a range of platforms.

Contact details

For more information, contact Client Services on 1800 895 388, or visit kardiniacapital.com.au

Notes:

- Kardinia Capital is an investment manager that invests solely in Australian and New Zealand securities.
- The Bennelong Kardinia Absolute Return Fund (Fund) was launched on 1 May 2006 by another trustee. Bennelong Funds Management Ltd (Bennelong) assumed responsibility as replacement trustee on 16 August 2011. Performance information prior to 16 August 2011 relates to the previous trustee. Mark Burgess and Kristiaan Rehder were employed by the previous trustee and became employees of Kardinia Capital Pty Limited (Kardinia), which has been engaged by Bennelong to manage the Fund, in August 2011. Kardinia intends to apply the same investment philosophy and strategy in respect of the Fund. Past performance is not a reliable indicator of future performance.
- Valuations are computed and stated in Australian dollars and are provided by independent service provider, Custom House Fund Services (Australia) Pty Limited (Custom House).
- Performance results are presented net of all transaction costs, investment management and performance fees and all other costs incurred by the Fund. Performance is the total return of the fund (assuming re-investment of distributions) and is quoted based on hard-close unit prices, without including the impact of buy/sell spreads.
- The Fund's benchmark is the RBA cash rate. Since inception annualised compound return is 11.14%; annualised compound benchmark return is 4.00%.
- A complete and detailed list of performance results including a presentation is available upon request.
- Please note that performance data for the Fund is historical data based on the main series using a monthly unit pricing methodology. For those who are invested in the daily series please contact Client Services (1800 895 388 or client.services@bennelongfunds.com) to request your performance history.

Disclaimer: This information is issued by Bennelong Funds Management Limited (ABN 39 111 214 085, AFSL 296806) (BFML) in relation to the Bennelong Kardinia Absolute Return Fund. The information provided is general information only. It does not constitute financial, tax or legal advice or an offer or solicitation to subscribe for units in any fund of which BFML is the Trustee or Responsible Entity (Bennelong Fund). This information has been prepared without taking account of your objectives, financial situation or needs. Before acting on the information or deciding whether to acquire or hold a product, you should consider the appropriateness of the information based on your own objectives, financial situation or needs or consult a professional adviser. You should also consider the relevant Information Memorandum (IM) and or Product Disclosure Statement (PDS) which is available on the BFML website, bennelongfunds.com, or by phoning 1800 895 388. BFML may receive management and or performance fees from the Bennelong Funds, details of which are also set out in the current IM and or PDS. BFML and the Bennelong Funds, their affiliates and associates accept no liability for any inaccurate, incomplete or omitted information of any kind or any losses caused by using this information. All investments carry risks. There can be no assurance that any Bennelong Fund will achieve its targeted rate of return and no guarantee against loss resulting from an investment in any Bennelong Fund. Past fund performance is not indicative of future performance. Information is current as at 31 January 2017. Kardinia Capital (ABN 20 152 003 186) is a Corporate Authorised Representative of Bennelong Funds Management Limited (BFML), ABN 39 111 214 085, Australian Financial Services Licence No. 296806.